



Seaford Community Garden

& Urban Biodiversity Project

Summary. Our Proposal

The Opportunity

1. **Disused public space** An empty, underutilised open space with great visibility, active mobility connections and potential for ecosystem restoration.
2. **Urban biodiversity** A wetland environment with the potential to be expanded and improved to provide valuable habitat and support urban biodiversity
3. **Community connections** A community with increasing economic, social and mental stress indicators.
4. **Climate change** A changing climate that continues to highlight the need to build greener, more sustainable urban environments, reduce the impacts of food production and facilitate community participation and connection



Our Proposal

The *Seaford Community Garden and Urban Biodiversity Project* is our response to this opportunity. Integrating urban agriculture with communal gardens and a native wetland ecosystem, the project will transform a disused, ecologically barren open space into a flourishing public garden, meeting place and community hub, providing an opportunity to grow food, connect with nature, build community and green our urban environment.

Our proposal includes two main components:

1. **Community Garden**, including 40 individual plots, communal gardens, native food gardens, demonstration water-wise native household gardens, pollinator garden, a public orchard, perennial edible gardens, native lawn alternative demonstration plots, public herb garden, picnic spaces, compost, wormfarm and sensory garden spread over about an acre of unloved public urban land.
2. **Urban Wetland Biodiversity project**, which will plant over 1000 native trees, shrubs, groundcovers, grasses and aquatic species to create a thriving wetland ecosystem.

Project Benefits

1. **Health** Research consistently demonstrates access to nature and community gardens improves quality of life, providing opportunities for exercise and relaxation, community connection, improved food security and access to fresh fruit and vegetables.
2. **Environment** The project directly contributes to a greener, more sustainable urban environment, restoring degraded land, creating valuable habitat for urban wildlife and providing a setting for lifelong environmental education. The community garden also contributes to building a more secure and sustainable food production system.
3. **Social** The community garden acts as a meeting place, reducing social isolation and fostering the development of relationships and community. Through actively involving people in their own community and providing a range of opportunities to engage, the project represents a shared space for people of varying ages, cultures, abilities, experiences and interests to collectively shape their neighbourhood and learn from each other.

Summary. Project Objectives

The purpose of this project is to create a shared space for our community to come together to connect with nature, build meaningful relationships, promote better health and well-being and contribute to a more sustainable, resilient urban environment.

In line with this vision, the **objectives of the project** are to:

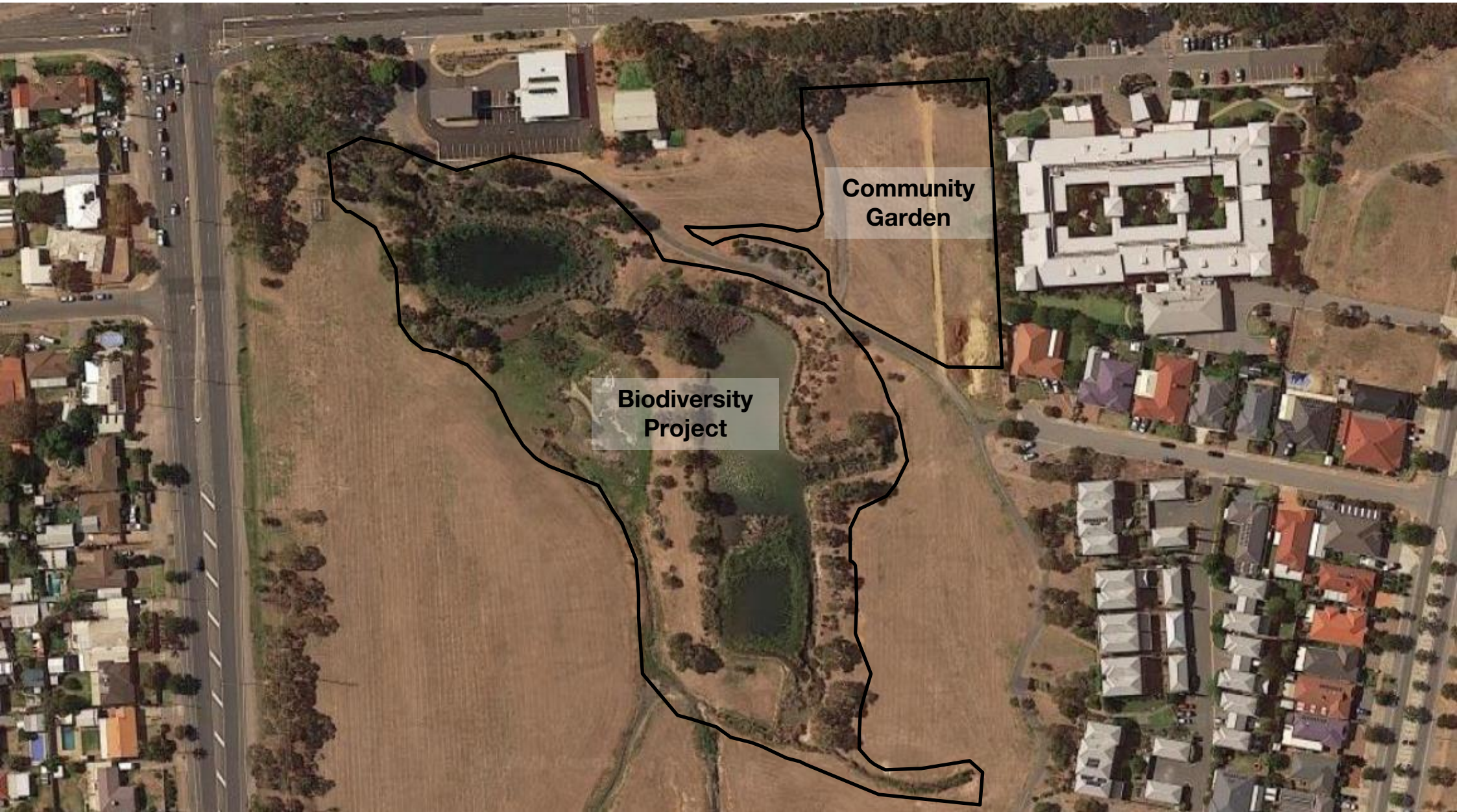
1. Actively contribute to creating and improving urban biodiversity through reclaiming disused public space
2. Promote, encourage and assist in cultivating, growing and cooking fruit and vegetables
3. Provide an accessible and safe environment for all members of the community to interact and learn within the garden
4. Educate members of the community about organic gardening, nutrition and healthy lifestyle practices
5. Encourage and support nature education and connection with the natural world
6. Integrate sustainable and low-impact practices across all elements of the project, reflecting an ecologically sustainable approach to natural resource management
7. Provide mechanisms to improve the skills, knowledge and capacity of the community to respond to climate change, adopt sustainable practices and contribute to a greener, more resilient urban environment
8. Provide a space for leisure, enjoyment and community connection
9. To work with members of the Aboriginal and Torres Strait Islander community and people from culturally and linguistically diverse backgrounds and other ethnic cultures to ensure inclusiveness

Summary. By the Numbers



7	Our project contributes to all 7 of the Green Adelaide Priorities
25,000	m2 of greened public space
3,000	The area of the proposed community garden (m2)
5	The area of the urban biodiversity project (acres), incorporating an existing wetland ecosystem
1,500	Native plants planted
3,000	Plants planted in total
40	Individual garden beds available for rent
200	Capacity for over 200 members
18	Project delivered in 18 months
3,000	Volunteer hours involved in project creation
24/7	Communal areas of the garden will be permanently open to the public
247,000	Estimated project value (\$)
75,000	Our ask from the Green Adelaide Grassroots Grants Program to make this a reality
3.5x	Value multiplier on monies granted

The Site. Current Landscape



The Site. On the Ground

The site on Seaford Road. Sparsely vegetated, weed covered and disused, it offers great potential. It has a nice elevated position overlooking the wetland to the south, great walking and cycling connectivity, ample carparking, water connection, is highly visible and is adjacent to a retirement village. The wetland area has seen some small-scale revegetation efforts in recent years, and holds great potential for restoration of urban ecosystem health and biodiversity support. However, its sparsely vegetated, with bare, exposed soil across much area.



The Project site. Looking south over the wetland from the northern edge of the community garden site.



The wetland site, showing the sparse vegetation coverage

The Site. Seaford Road

We have identified an underutilised open space owned by Council.

We propose to develop the Community Garden (approx. 3,000m²) in the North-East corner (light green).

Our Biodiversity Restoration Project will blend the native garden perimeter landscaping into the wetland (dark green), focussing on the Eastern side of the wetland. The area is approx. 5 acres, although the planting will only occur on a fraction of that space.

Only a small fraction of the open space is improved and utilised, leaving room for future expansion or multiple other uses.



The Community Garden. Layout



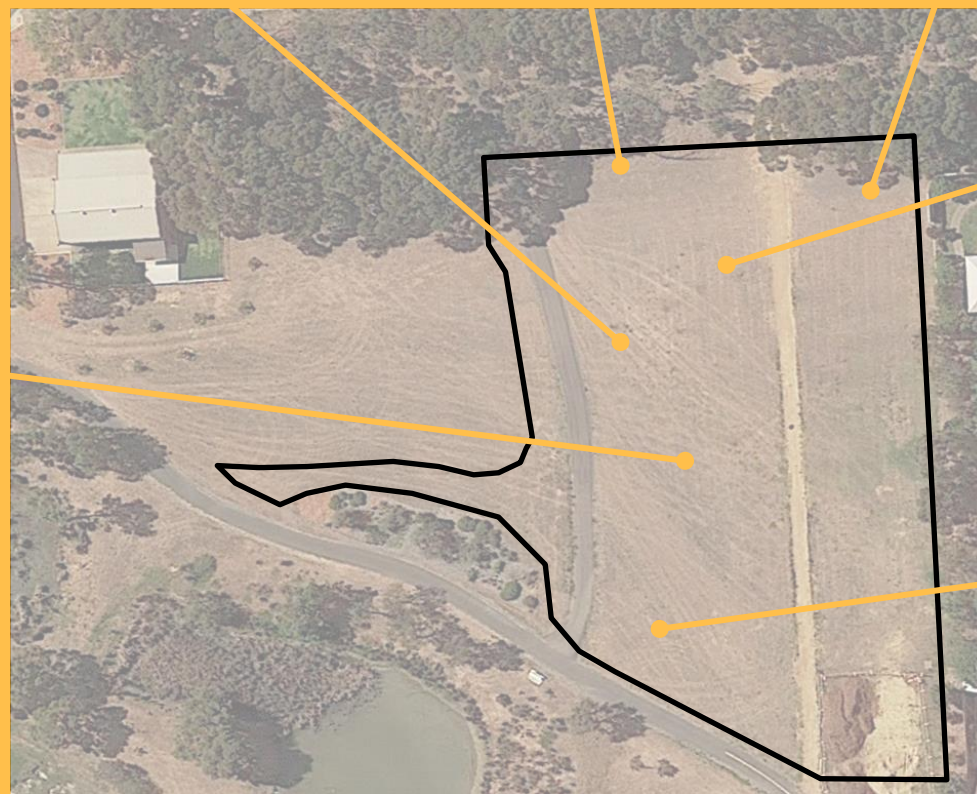
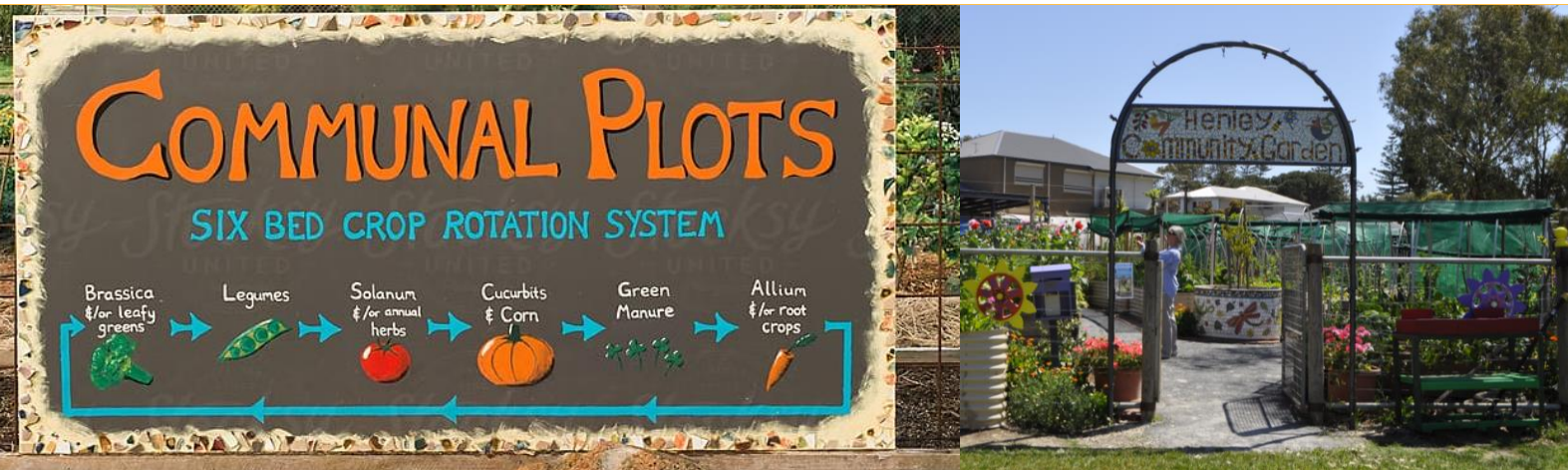
NOTES

Approx. 3,000 m2 total landscaped area, including orchard, individual beds, communal pick'n'come-again gardens, sensory, herbs and perennial gardens, native gardens and landscaping, sustainable front yard demo plots and shed and pergola infrastructure

Visuals. Design Examples



Visuals. More Design Examples



The Urban Biodiversity Project. Layout

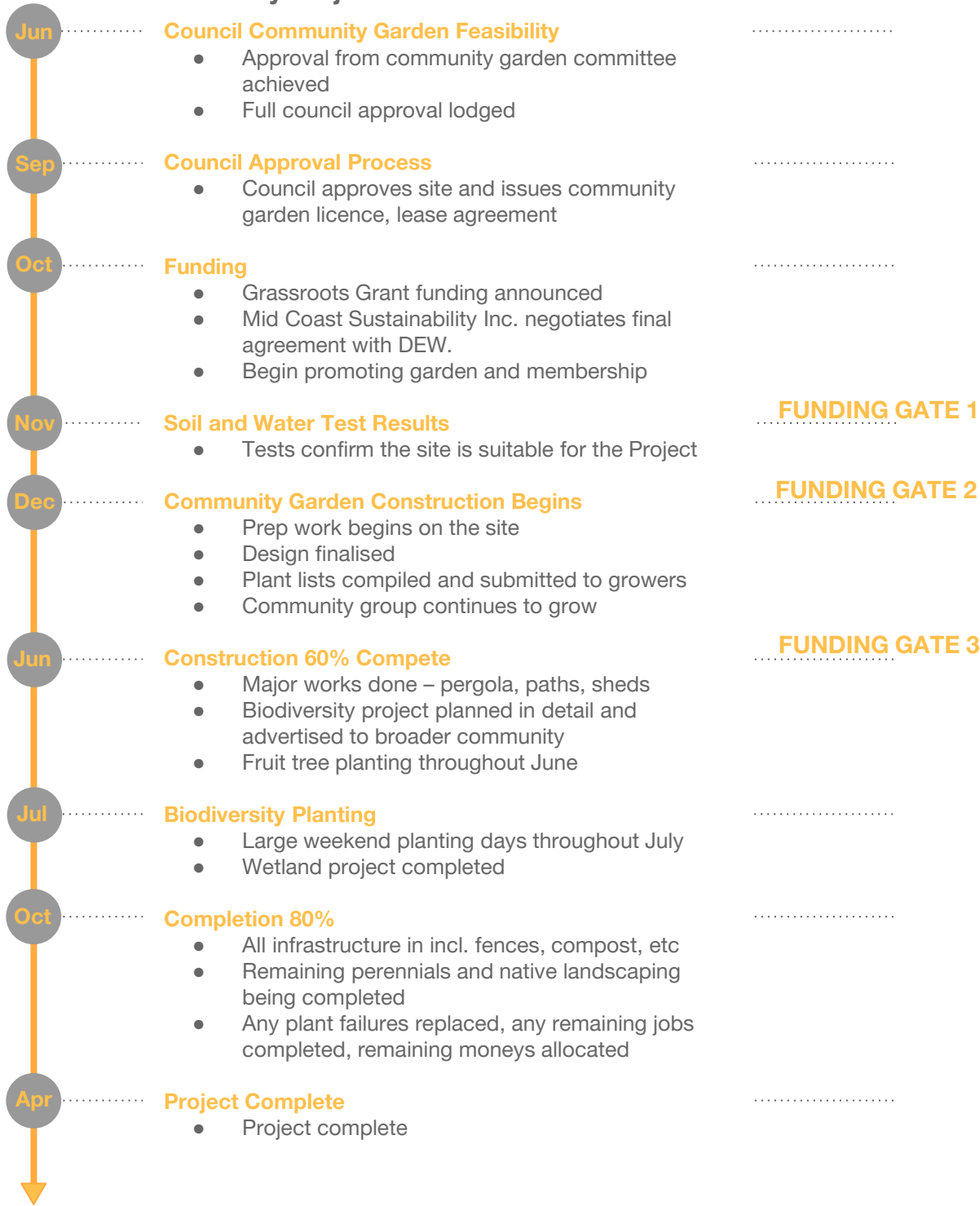


Project Schedule.

The project will be delivered within 18 months as per the Grassroots Grants timeframe. We anticipate receiving the grant conditionally upon the Council approving the Project’s development on the chosen site.

We have no reason to believe this will be delayed or denied at present, having worked through an initial site screening with Council. We will also complete a 3-stage community garden application process before submitting for formal approval.

Infrastructure proposed as part of our Project (pergola, shed, fences) are typically exempt from development approval, and no zoning or change of land use should be required. Thus we expect no lengthy planning process will be required.



Summary. Project Particulars



Risk Assessment

- Risk Assessment complete in Draft. In summary, a low risk, high reward project.
- Staged funding approach further reduces risk.
- Experienced core team reduces likelihood of mistakes.
- Flat site, with minimal current use value, so little to lose.
- Site has passed initial screening by Council. Currently being assessed in more detail.
- Detailed management plan to address health and safety risks.
- Strong community support mitigates the risk of the project faltering.



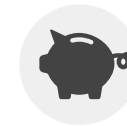
Community Engagement

- Strong support from Seaford Network, Onkaparinga Council, CFS, Resilient South, Onkaparinga Food Security Collaborative and community members already consulted.
- Strong links to other community gardens nearby.
- Design incorporates a variety of ways for people to engage with the space, broadening the audience.
- Significant demand in Seaford area, especially from nearby aged care, schools and civic service hubs.
- Community engagement plan nearing completion: next steps are nearby resident petitioning and promotion via partner networks.



Management

- Core management team with experience starting, constructing, running and participating in community gardens, including North Brighton, CERES, Whittlesea, Moreland, Hackam, Sellicks Beach and Willunga.
- Core people incorporated association committee have deep experience
- Detailed management plan currently being completed as part of Council submission, covering mgmt. structure, ops. procedures, health and safety, communication, member services, dispute resolution and wind-up planning.



Budget & Funding

- \$247,000 Project
- \$172,000 Community and partner in-kind
- \$75,000 Grassroots Grant for first 18 months (establishment)
- Project will be self-sufficient after 18 months, using additional grants for new project development, whilst plant sales, members fees and community events will fund ongoing operation.
- 3 stages of funding gates proposed to reduce project risk

Summary. About Us

Whilst our community organisation has just been formed to start the Project, the core team has decades of experience in community gardens, ecosystem restoration, project development and community volunteer work.



Jack is a sustainability designer and planner with 10 years experience in project development. He has run a community garden (CG), launched programs at CERES, is currently designing Hackham CG's expansion and is an active member at North Brighton CG. He has a passion for ecosystem restoration and regularly volunteers with 3 revegetation organisations. Jack is the chair of Mid Coast Sustainability Inc., the incorporated body responsible for the Project.



Hannah is an environmental and water engineer and planner with 10 years experience in consulting. She's also been a professional grant writer and community organisation fundraiser, facilitator and teacher. She just began a committee role with Biodiversity McLaren Vale and is an experienced project manager. She reestablished and ran Engineers Without Borders SA and has held a range of other other volunteer coordinator positions.



Beau is a professional civil engineer and garden designer with his own successful garden design business. He designed and constructed much of North Brighton community garden and is the current co-chair. A qualified horticulturalist, Beau has impressive skills in gardening, connections in the SA CG network and his ability to build partnerships in the building materials industry will be invaluable to the Project (hello Wood'n'Logs!).



Angela runs Wollemi Natives, a local provenance native plant nursery serving the Midcoast and Southern Lofty's. She has 3 decades of experience in community development and as a revegetator of native landscapes in SA.



Sue has decades of experience in community gardens and community development organisations. A retired primary school principal, avid community gardener and current board member at the Collingwood Children's Farm, Sue's experience and guidance to the rest of the committee is invaluable, as she has been part of some of the best grassroots community projects in the country.



Larry launched the Whittlesea community garden from scratch as a response to the Victorian bushfires, whilst chairing the community bushfire response for 10 years. An experienced bushland rebuilder, Larry spends half his year in Seaford and half in rural Victoria.

Summary. Our Supporters and Partners

Chris Picton MP

Member for Kaurua
Shadow Minister for Health and Wellbeing



Onkaparinga
Food Security
Collaborative



Summary. Our Supporters and Partners





Seaford Community Garden & Urban Biodiversity Restoration Project



Get in touch

Mid Coast Sustainability Inc.

Jack Clarke

jack.challis.clarke@gmail.com

m: 0457 213 189